

Class

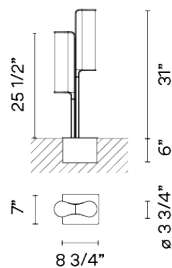
2805

Design By Sebastian Herkner

VIBIA

Class is a double outdoor beacon lamp in which matter and light come together in a single body. The rigid stem rises elegant, while the light passes softly through its cylinders, asymmetrically placed.

Spec sheet



Any modifications require a minimum order quantity and extra lead time

Finish 11 Black
NCS S 8500-N

LED 2700 K

Dimming 0-10V / TRIAC

Installation type Remote

LED CRI>90 990 lm 141
2700 K

Driver Constant Current 350 120~277 V V
50~60 Hz HZ

☐ Dimmable LED IP65 Multi-volt 

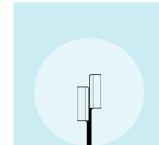
Application Outdoor

Packaging 2 Box
46.46 m x 13.78 m x 14.57 m
Gross weight 65.2
Net weight 56.39
Vol. 6.5191

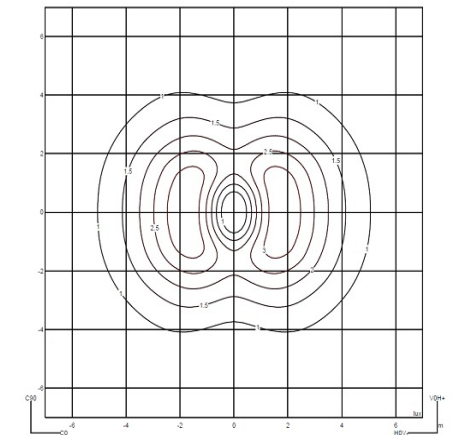
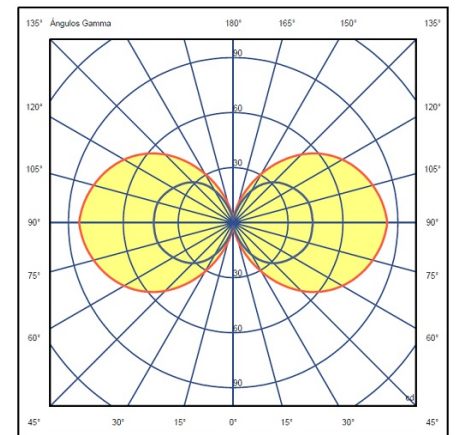
Lighting effect

Volumetric Diffuser

Subtly directed, diffused light that generates a soft hierarchy of light on to the illuminated surface



Photometric Data



Efficiency 94.86 lm/W
Coordination System CG
Total Flux 664.03 lm
Maximum Value 85.44 cd

VIBIA, INC.

Office / Oficina
272 Fernwood Ave. Edison, NJ 08837. USA

International T 732 417 1700
Spain / Portugal T +34 934 796 970

All of our products come with a two year standard warranty. Check US & Canada Term and Condition sales@vibia.com

sales@vibia.com
www.vibia.com/us/usa